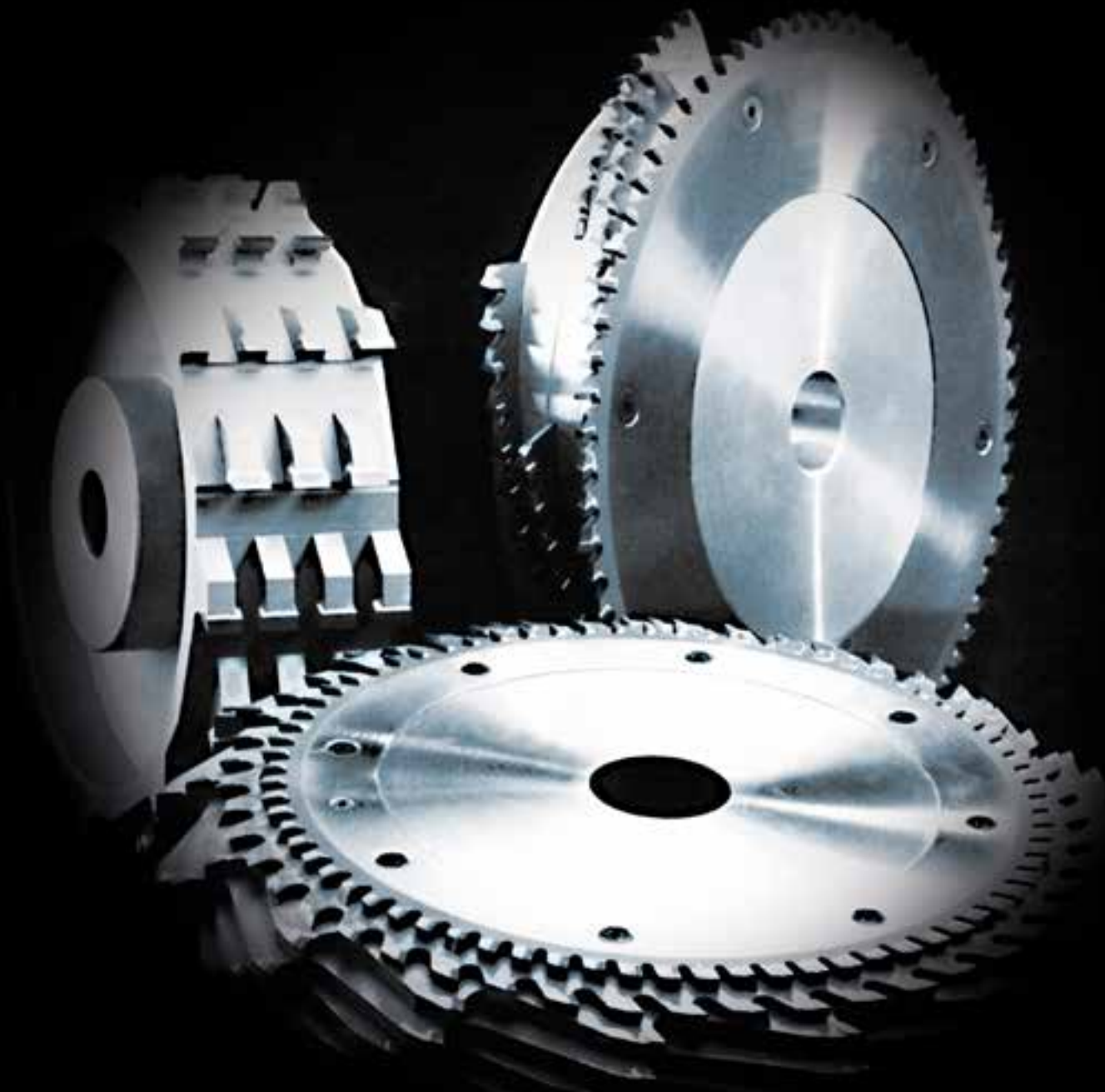


Refuse Systems & Hoggers



NAPGLADU

Delivering Productivity

Table of Contents – Section F

Description	Page
Board Mills	4
Sidewinder® Hogs Board Mills	5
Aluminum Hogs	6-7
Step Cone Hogs	8
Straight Refuse Hogger	9
New Generation Hogger	10
Spare Parts for AKE Hogs	11
AKE Saw Blades Leuco Hogs	12
Index	13

- A
- B
- C
- D
- E
- F**
- G
- H
- I
- J
- K

Optional Items		
Bores over 2.125	Hubs and Trepan (up to 1")	Mounting Holes (qty. 1-6)
Cone Bore	Hubs and Trepan (over 1" to 2")	Mounting Holes (qty. 7-12)
Keyways (Standard)	Hubs and Trepan (over 2" to 4")	Sleeve Bore

Board Mills



Replacement Trim Saws

Product No.	Number of Teeth	Blade Diameter
TS14	96	14"
TS14	100	14"

Replacement Spare Parts

Product No.
AHSEGB - Broach Segments
AHSEGNB - Non Broach Segments
AHS - Segment Screws 5/16"-18 x 5/8" FHSCS
AHS - Trim Saw Screws 1/4"-20 x 5/8" FHSCS

Hogger Sections - with Trim Saws (Broached & Non-Broached)

Part No.	Hogger Diameter - Large	Bore Size	Section Width	Number Segments
AH14-158T	14.17"	specify	1.5"	8
AH14-1510T	14.17"	specify	1.5"	10

Hogger Adder Sections - without Trim Saws (Broached & Non-Broached)

Part No.	Hogger Diameter - Large	Bore Size	Section Width	Number Segments
AH14-158	14.17"	specify	1.5"	8
AH14-1510	14.17"	specify	1.5"	10

Patented Sidewinder® Hogger Board Mills



Protected by the following patents:
 US #5603365 US #5738156 US #5653275
 Pat. Pend. in other countries

Replacement Trim Saws

Product No.	Number of Teeth	Blade Diameter
TS1468	96	14.68"

Replacement Spare Parts

Product No.
SAHS - Sidewinder® Insert Screws INS-0039
AHS - Trim Saw Screws 1/4"-20 x 5/8" FHSCS

8 & 10 Wing Hogger Sections - with Trim Saws

Part No.	Hogger Diameter - Large	Wings	Bore Size	Cutting Width	No. of Inserts
SAH14-136-8T	14.68"	8	specify	1.36"	24
SAH14-174-8T	14.68"	8	specify	1.74"	32
SAH14-213-8T	14.68"	8	specify	2.13"	40
SAH14-251-8T	14.68"	8	specify	2.51"	48
SAH14-290-8T	14.68"	8	specify	2.90"	56
SAH14-328-8T	14.68"	8	specify	3.28"	64
SAH14-367-8T	14.68"	8	specify	3.67"	72
SAH14-405-8T	14.68"	8	specify	4.05"	80
SAH14-444-8T	14.68"	8	specify	4.44"	88
SAH14-136-10T	14.68"	10	specify	1.36"	30
SAH14-174-10T	14.68"	10	specify	1.74"	40
SAH14-213-10T	14.68"	10	specify	2.13"	50
SAH14-251-10T	14.68"	10	specify	2.51"	60
SAH14-290-10T	14.68"	10	specify	2.90"	70
SAH14-328-10T	14.68"	10	specify	3.28"	80
SAH14-367-10T	14.68"	10	specify	3.67"	90
SAH14-405-10T	14.68"	10	specify	4.05"	100
SAH14-444-10T	14.68"	10	specify	4.44"	110

Step Cone Hogger

A

B

C

D

E

F

G

H

I

J

K



Technical Information

- Laser cut trim saws
- Trim saws are 3:1 tooth style Standard 72 teeth
- Utilizes a progression from small diameter trim saw blades to large diameter hogger sections

Applications

- For use on double end tenons, double cut-off and roll feed machines, sizing machines, gang rip machines, and multiple cutting machines
- To hog off all material into sawdust while simultaneously producing a trim cut

Advantages

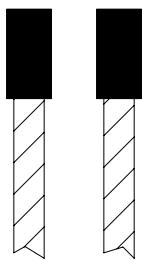
- Dynamically balanced to reduce vibration
- Individual teeth for lower total maintenance cost

Replacement Trim Saws

Product No.	Number of Teeth	Blade Diameter
HC 248-1	72	10"

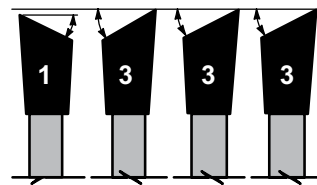
Step Cone Cross Cut

Part No.	Max. Diameter	Min. Diameter	Cutting Width
HC 248	11.75"	10"	3/8"
HC 348	12.50"	10"	3/4"
HC 448	12.50"	10"	1-1/4"



Flat top tooth configuration on hogger sections.
No face shear. Hoggers have 16 teeth each.

#1 HAS
LOW DROP,
OVER #3
KEEP SIDE



3 TO 1 TOOTH CONFIGURATION

PICTURED
IS A RIGHT-HAND
SAW BLADE WITH
TOP TOOTH FACE
COMING

The trim saws have a 3:1 tooth style for clean smooth cuts on the keep side of the material. Pictured is a right hand trim saw, top tooth face coming. Trim saws have 72 teeth each.

Aluminum Hoggers



Technical Information

- Bodies are made from aluminum alloy
- 1" or 1-1/2" wide sections can be bolted together to form various cutting widths
- Laser cut trim saws
- Trim saws are 3:1 tooth style (LH or RH)

Applications

- For use on double end tenon, double cut-off and roll feed machines, sizing machines, gang rip machines, and multiple cutting machines
- To hog off all material into dust, simultaneously producing a trim cut

Advantages

- Lighter to handle during tool changes
- Require less horsepower over steel hoggers
- Segments are easily replaced with allen wrench
- Aerodynamics of gullets in segments reduce air turbulence and noise levels
- Dynamically balanced to reduce vibration

Replacement Trim Saws

Product No.	Number of Teeth	Blade Diameter
TS10	96	10"
TS12	72	12"
TS14	72	14"

Replacement Spare Parts

Product No.

AHSEGB - Broach Segments

AHSEGNB - Non Broach Segments

AHS - Segment Screws 5/16"-18 x 5/8" FHSCS

AHS - Trim Saw Screws 1/4"-20 x 5/8" FHSCS

A

B

C

D

E

F

G

H

I

J

K

Aluminum Hogs

A

Hogger Sections - with Trim Saws (Broached & Non-Broached)

Part No.	Hogger Diameter - Large	Bore Size	Section Width	Number Segments
AH10-104T	10.25"	specify	1"	4
AH12-104T	12.12"	specify	1"	4
AH12-106T	12.12"	specify	1"	6
AH14-106T	14.17"	specify	1"	6
AH14-108T	14.17"	specify	1"	8
AH10-154T	10.25"	specify	1-1/2"	4
AH12-154T	12.12"	specify	1-1/2"	4
AH12-156T	12.12"	specify	1-1/2"	6
AH14-156T	14.17"	specify	1-1/2"	6
AH14-158T	14.17"	specify	1-1/2"	8

H

I

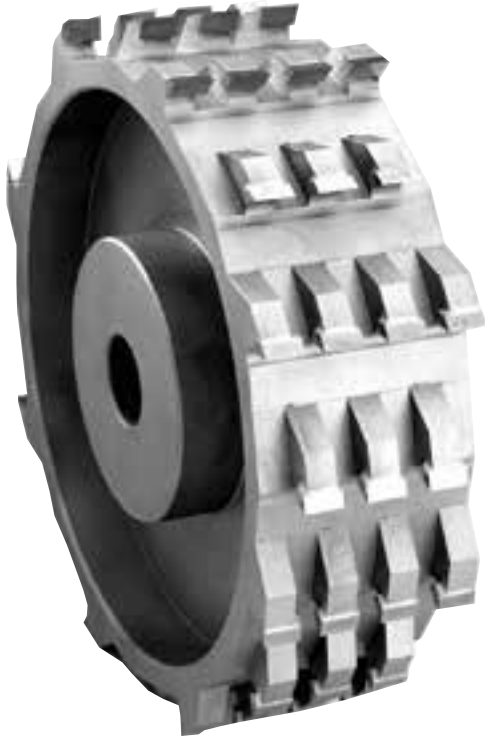
Hogger Adder Sections - without Trim Saws (Broached & Non-Broached)

Part No.	Hogger Diameter - Large	Bore Size	Section Width	Number Segments
AH10-104	10.25"	specify	1"	4
AH12-104	12.12"	specify	1"	4
AH12-106	12.12"	specify	1"	6
AH14-106	14.17"	specify	1"	6
AH14-108	14.17"	specify	1"	8
AH10-154	10.25"	specify	1-1/2"	4
AH12-154	12.12"	specify	1-1/2"	4
AH12-156	12.12"	specify	1-1/2"	6
AH14-156	14.17"	specify	1-1/2"	6
AH14-158	14.17"	specify	1-1/2"	8

J

K

Straight Refuse Hogger



Technical Information

- Staggered tooth design head
- CNC machined cutter bodies

Applications

- Used on vertical spindles to size material (ie door sizing machines)

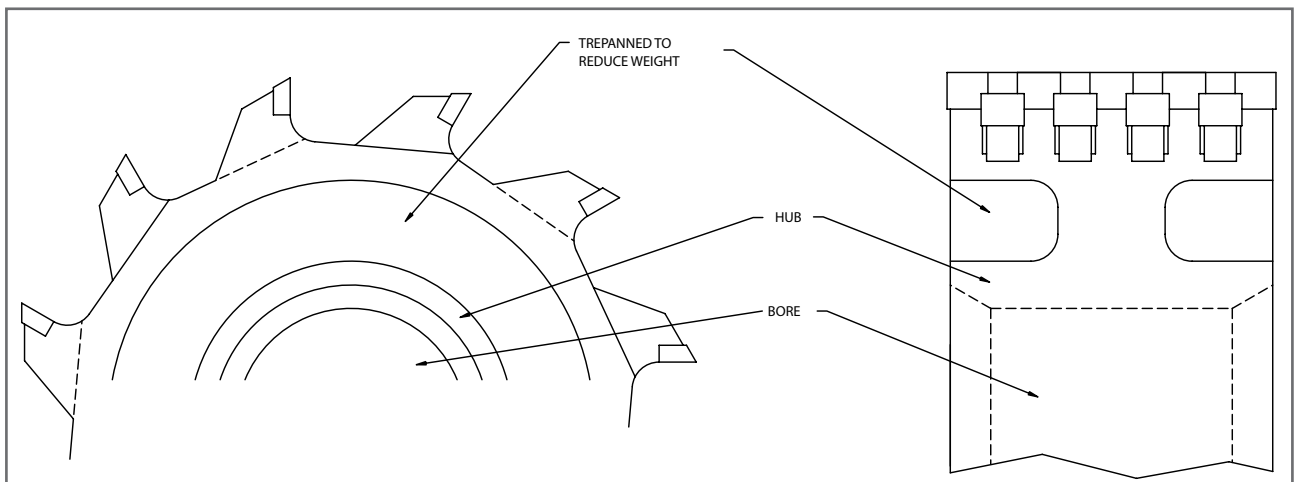
Advantages

- No trim saw used with this system
- Trepanned for weight reduction
- Staggered tooth design for reduced cutting pressure and horsepower requirements
- Individual teeth for lower total maintenance cost

Straight Refuse Hogger

Head Diameter	Wings	Bore Size	Cutting Width
10"	8+8	1-1/4"	3"
12"	8+8	1-1/4"	3"
10"	8+8	1-1/4"	4"
12"	8+8	1-1/4"	4"

Note: Additional cutting widths, diameters, & bore sizes available upon request.



Advanced Hogger for Carbide or Diamond



Advantages

- Eliminates chipping along and across the grain
- Facilitates the aspiration of the chips
- Prevents blow-outs in the corners
- Noise reduction
- Requires less cutting force
- Cost effective

Technical Information

- Staggered inserts at multiple diameters
- Can be mounted on quick change system
- Aluminum body available for reduced weight
- Four-sided cutting edge knives
- Diamond blade can be used

New Generation Hogger

Diameter Range	Bore Size	Cutting Width
5" - 14"	Specify	Specify

Replacement Parts

U.S. Part No.	CAN Part No.	Description
	146-1503	Torx Screw T-20-D
TJ165	211-5802	Insert 14 x 14 x 2

AKE Replacement Sawblades for Leuco Hoggers

Part No.	Diameter	Teeth	Bore Size	Kerf	Pin Holes	Rotation	Type of System
460-7101	200mm	40Z	80mm	4.0mm		CCW	
460-7102	200mm	40Z	80mm	4.0mm		CW	
460-7103*	200mm	60Z	80mm	4.0mm		CCW	
460-7104*	200mm	60Z	80mm	4.0mm		CW	
460-7107	220mm	60Z	80mm	4.0mm	6/154/6P	CCW	
460-7108	220mm	60Z	80mm	4.0mm	6/154/6P	CW	
460-7109	250mm	48F	80mm	4.0mm		CCW	
460-7110*	250mm	48F	80mm	4.0mm		CW	
460-7157*	250mm	72Z	80mm	4.0mm		CCW	Leuco-Hogger
460-7117	250mm	72Z	80mm	4.0mm		CW	Leuco-Hogger
460-7111*	250mm	72Z	100mm	4.0mm		CCW	
460-7112*	250mm	72Z	100mm	4.0mm		CW	
460-7113	255mm	48Z	100mm	4.0mm		CCW	
460-7114	255mm	48Z	100mm	4.0mm		CW	
460-7115	255mm	60Z	80mm	4.0mm		CCW	
460-7116	255mm	60Z	80mm	4.0mm		CW	

*Standard

AKE Hogger Sawblades and Spare Parts

AKE Fixmatic Clamping System

Part No.	Description	Diameter	Hogger Width	Bore Size
462-0A01	For Hogger 200mm Dia.	147mm	35mm	35DKN
462-0A02	For Hogger 200mm Dia.	147mm	40mm	40DKN

Replacement Teeth For AKE Hogs

Part No.	Description
281-5801	Tungsten Carbide (C2) for natural wood.

Per pack of 12 pieces



AKE Sawblades For Hogger, Flat Tooth

Part No.	Diameter	Teeth	Bore Size	Kerf	Rotation	Type of System
460-7001	205mm	44Z	80mm	4.0mm	CCW	FixMatic
460-7002	205mm	44Z	80mm	4.0mm	CW	FixMatic
460-7003*	205mm	60Z	80mm	4.0mm	CCW	FixMatic
460-7004*	205mm	60Z	80mm	4.0mm	CW	FixMatic
460-7005	255mm	48Z	80mm	4.0mm	CCW	
460-7006	255mm	48Z	80mm	4.0mm	CW	
460-7007	255mm	48Z	100mm	4.0mm	CCW	FixMatic
460-7008	255mm	48Z	100mm	4.0mm	CW	FixMatic
460-7009*	255mm	60Z	80mm	4.0mm	CCW	
460-7010*	255mm	60Z	80mm	4.0mm	CW	
460-7011	255mm	60Z	100mm	4.0mm	CCW	FixMatic
460-7012	255mm	60Z	100mm	4.0mm	CW	FixMatic
460-7013	305mm	54Z	80mm	3.2mm	CCW	
460-7014	305mm	54Z	80mm	3.2mm	CW	

Replacement saw blades for hogs on FixMatic rapid clamping system.

*Standard