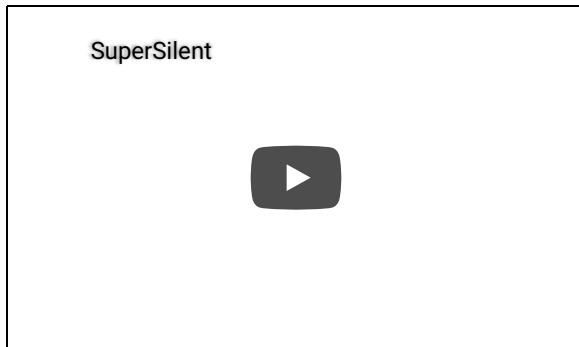
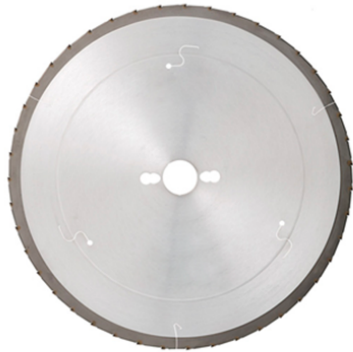


## SuperSilent Thin Kerf Diamond Blades

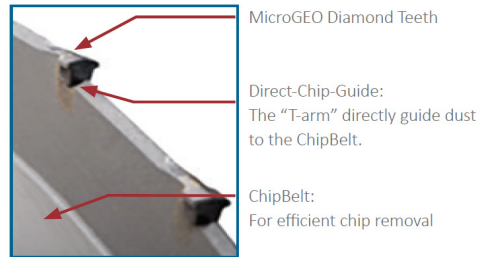


### Features

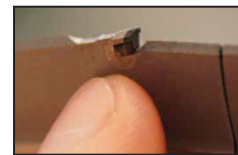
- MicroGeo Diamond teeth
- 2mm ultra thin kerf
- Direct-Chip-Guide removes chips and Chip Belt carries chips away from cutting path

### Benefits

- Exceptionally low costs per cut
- Scalpel-like cuts with clean entry and exit edges
- Cutting all materials allows machines to keep running without blade changes



The MicroGeo diamond teeth eliminates the large space between teeth.



The Direct-Chip-Guide removes chips from the cutting path.

### Main Blade

Part No.	D	d	B	b	Teeth	Keyways or Holes Qty.-Dia.-B.C.
4A1-0B00	303	30	2	1.8	43	2 ph 7/42 + 2 ph 9/46.5 + 2 ph 10/60

### Score Blade

Part No.	D	d	B	b	B1	Teeth
4A2-0B02	120	22	2	1.8	2.4	20